

TORANGA ST
* Pole # F7664Y
RD Sign

ARBOL VERDE ST
* Pole # 320989E

NARANGA ST
* Water Meter

DE RR

GUARD RAIL DETAIL

DISTANCE	0	10	20	30	40	50	60	70	80	90	100
POST SET	0.00	0.20	0.40	0.60	0.80	1.00	1.20	1.40	1.60	1.80	2.00

RIALTO AVE
* Mail Boxes
Pole # F5894Y

ROUTE

Pole # F7664Y
RD Sign

Water Valve

Pole # 320989E

Pole # 320987E & D.G.
36" Pepper Tree

Water Meter

Water Meter
2" Tree

3" Tree

Water Meter

Pole # F106/6Y
Water Meter

Water Meter

Pole # F106/7Y

* Water Meter
36" Palm Tree
4" P.C. Walk
36" Palm Tree
9" Tree

Pole # F7664Y

Post

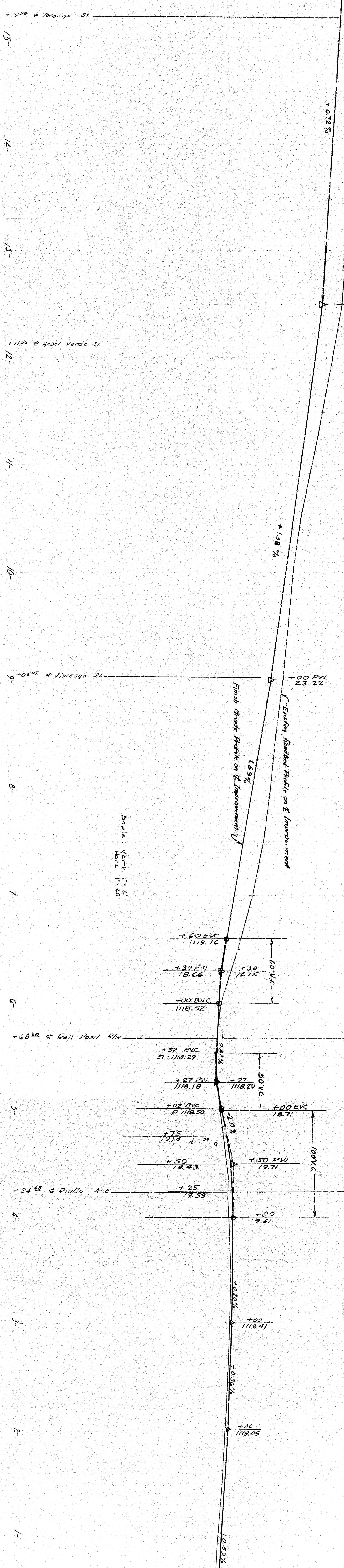
* Sign Board
Post

Post

* Pole # F9099Y & D.G.
24" C.M.P.
72" Pepper Tree
(to be removed)

Pole # F5895Y

Pole # 3604Y
Sewer Man Hole (Adjust to Grade)



* Pole # 320989 with DG

* Pole # 913728C
Sewer Manhole (Adj. s. to Grade)

* Gas Meter
40" Pepper Tree (to be removed)

* Pole # 534555E & D.G.

* Pole # 211688E & D.G.
* V.C. Box Gas Valve
1" = 40'

* Manhole (Adjust to grade)

Pole # 90352E

NOTES:
SEE FILE NO. 1259
FOR SUPPLEMENTARY DRAWINGS

Scale: 1" = 40'

Scale: Vert. 1" = 40'
HORIZ. 1" = 40'

DATE: 3/25/55

Drawn by: [Name]
Checked by: [Name]
Approved by: [Name]

TORANGA ST
* Pole # F7664Y
RD Sign

ARBOL VERDE ST
* Pole # 320989E

NARANGA ST
* Water Meter

DE RR

GUARD RAIL DETAIL

DISTANCE	0	10	20	30	40	50	60	70	80	90	100
POST SET	0.00	0.20	0.40	0.60	0.80	1.00	1.20	1.40	1.60	1.80	2.00

RIALTO AVE
* Mail Boxes
Pole # F5894Y

ROUTE

Pole # F7664Y
RD Sign

Water Valve

Pole # 320989E

Pole # 320987E & D.G.
36" Pepper Tree

Water Meter

Water Meter
2" Tree

3" Tree

Water Meter

Pole # F106/6Y
Water Meter

Water Meter

Pole # F106/7Y

* Water Meter
36" Palm Tree
4" P.C. Walk
36" Palm Tree
9" Tree

Pole # F7664Y

Post

* Sign Board
Post

Post

* Pole # F9099Y & D.G.
24" C.M.P.
72" Pepper Tree
(to be removed)

Pole # F5895Y

Pole # 3604Y

+0.95 @ Toranga St

14-

+11.55 @ Arbol Verde St

11-

+04.05 @ Naranga St

8-

7-

6-

5-

4-

3-

2-

1-

Scale: Vert. 1" = 4'
Hori. 1" = 40'

+60 EVC
1119.70

+30 PVI
1118.66

+00 BVC
1118.52

+50 EVC
1118.29

+27 PVI
1118.18

+02 BVC
1118.50

+75
1118.43

+50
1118.33

+25
1118.59

+00
1118.41

+00
1118.05

+00
1118.05

+00
1118.05

+00
1118.05

+00
1118.05

+00
1118.05

+00
1118.05

+00
1118.05

+00
1118.05

Existing Roadbed Profile on E Improvement
1.69%

60' VC

30' VC

50' VC

20' VC

100' VC

100' VC

100' VC

100' VC

100' VC

100' VC

100' VC

100' VC

100' VC

100' VC

100' VC

100' VC

100' VC

100' VC

100' VC

* Pole # 320989 with DG

* Pole # 913728C
Sewer Manhole (Adj. s. to Grade)

* Gas Meter
40" Pepper Tree (to be removed)

* Pole # 534555E & D.G.

* Pole # 211688E & D.G.
* V.C.C. Box Gas Valve
1" = 40'

* Manhole (Adjust to grade)

* Pole # 90352E

NOTES:
SEE CIVIL FILE NO. 1259
FOR SUPPLEMENTATION DRAWING

DATE: 10/25/88
DRAWN BY: [Signature]
CHECKED BY: [Signature]

APP. [Signature]